

Application

This LED wall luminaire has a partially shielded light source and is designed for the down lighting of interior and exterior locations with glare-free illumination.

Materials

Luminaire housing constructed of die-cast and spun marine grade, copper free (≤0.3% copper content) A360.0 aluminum alloy
Three-ply opal glass
High temperature silicone gasket

NRTL listed to North American Standards, suitable for wet locations
Protection class IP 44
Weight: 4.0lbs

Electrical

| | |
|---------------------------|--------------------|
| Operating voltage | 120-277V AC |
| Minimum start temperature | -20° C |
| LED module wattage | 8.9 W |
| System wattage | 12 W |
| Controllability | 0-10V dimmable |
| Color rendering index | Ra > 90 |
| Luminaire lumens | 724 lumens (3000K) |
| Lifetime at Ta = 15° C | 500,000 h (L70) |
| Lifetime at Ta = 40° C | 268,000 h (L70) |

LED color temperature

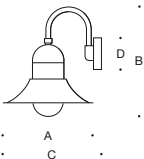
4000K - Product number + **K4**
3500K - Product number + **K35**
3000K - Product number + **K3**
2700K - Product number + **K27**

BEGA can supply you with suitable LED replacement modules for up to 20 years after the purchase of LED luminaires - see website for details

Finish

All BEGA standard finishes are matte, textured polyester powder coat with minimum 3 mil thickness.

| | | | |
|------------------|--------------|--------------|-------|
| Available colors | Black (BLK) | White (WHT) | RAL: |
| | Bronze (BRZ) | Silver (SLV) | CUS : |



| LED wall luminaire - partially shielded | | | | | |
|---|-------|--------|--------|--------|-------|
| | LED | A | B | C | D |
| 66 411 | 8.9 W | 12 5⁄8 | 14 1⁄2 | 13 1⁄2 | 4 3⁄8 |

Type:

BEGA Product:

Project:

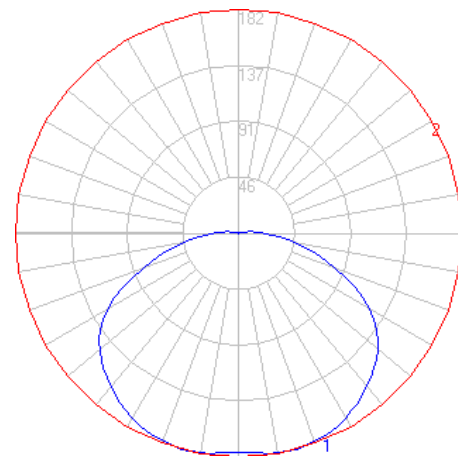
Modified:



BEGA

Photometric Filename: 66411.IES

TEST: BE_66411
TEST LAB: BEGA
DATE: 9/12/2017
LUMINAIRE: 66 411
LAMP: 8.9W LED



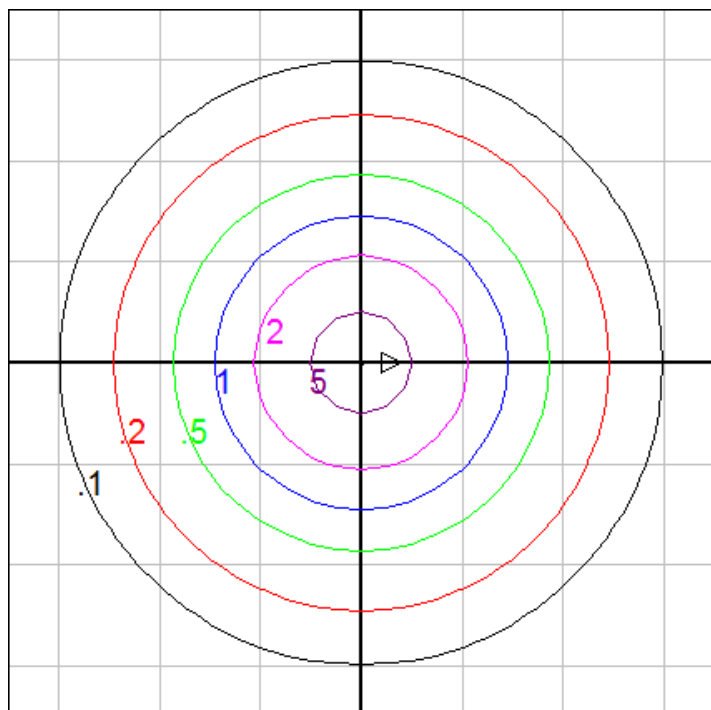
Characteristics

| | |
|------------------------------------|-------------------|
| IES Classification | Type V |
| Longitudinal Classification | Very Short |
| Lumens Per Lamp | N.A. (absolute) |
| Total Lamp Lumens | N.A. (absolute) |
| Luminaire Lumens | 724 |
| Downward Total Efficiency | N.A. |
| Total Luminaire Efficiency | N.A. |
| Luminaire Efficacy Rating (LER) | 60 |
| Total Luminaire Watts | 12 |
| Ballast Factor | 1.00 |
| Upward Waste Light Ratio | 0.02 |
| Max. Cd. | 182.007 (0H, 15V) |
| Max. Cd. (<90 Vert.) | 182.007 (0H, 15V) |
| Max. Cd. (At 90 Deg. Vert.) | 21.828 (3.0%Lum) |
| Max. Cd. (80 to <90 Deg. Vert.) | 47.401 (6.5%Lum) |
| Cutoff Classification (deprecated) | N.A. (absolute) |

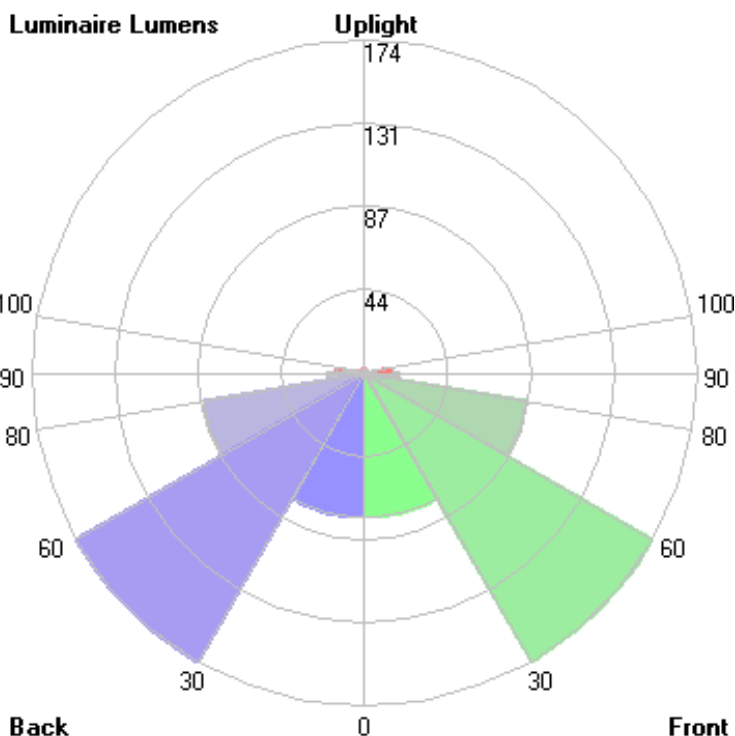
Lum. Classification System (LCS)

| LCS Zone | Lumens | %Lamp | %Lum |
|--------------|--------|-------|-------|
| FL (0-30) | 75.5 | N.A. | 10.4 |
| FM (30-60) | 174.4 | N.A. | 24.1 |
| FH (60-80) | 85.8 | N.A. | 11.8 |
| FVH (80-90) | 18.4 | N.A. | 2.5 |
| BL (0-30) | 75.5 | N.A. | 10.4 |
| BM (30-60) | 174.4 | N.A. | 24.1 |
| BH (60-80) | 85.8 | N.A. | 11.8 |
| BVH (80-90) | 18.4 | N.A. | 2.5 |
| UL (90-100) | 14.5 | N.A. | 2.0 |
| UH (100-180) | 1.9 | N.A. | 0.3 |
| Total | 724.6 | N.A. | 100.0 |

BUG Rating B0-U2-G1



Mounting Height = 5 ft. Grid Spacing = 5 ft.

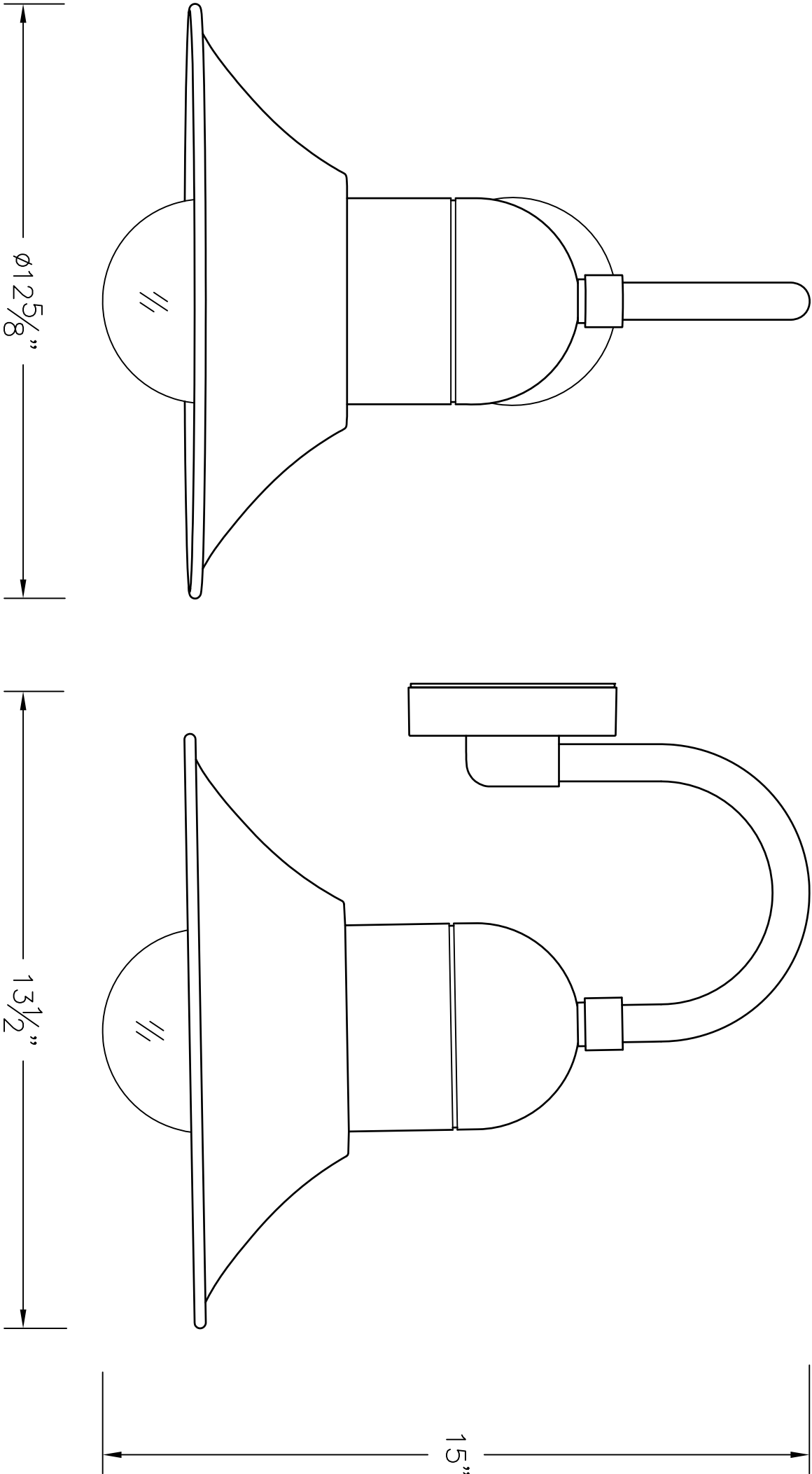
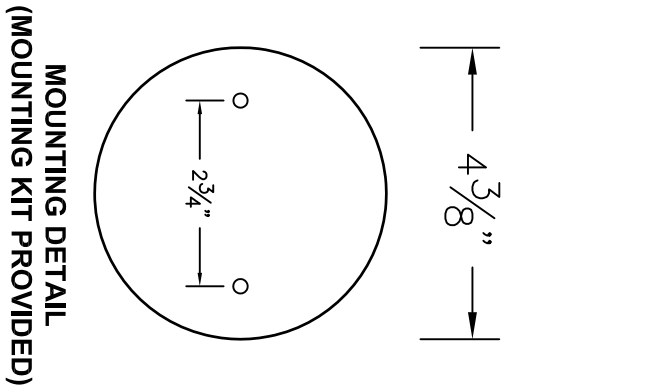


In the interest of product improvement, BEGA reserves the right to make technical changes without notice.

BEGA 1000 Bega Way, Carpinteria, CA 93013 (805)684-0533 Fax (805)566-9474 www.bega-us.com © Copyright BEGA-US 2015

9/12/2017

NOTE: LUMINAIRE # 66 411 – SEE SPECIFICATIONS



TYPE: _____

| | | | | | |
|--|------|-------------|--|---|-------------|
| SUBMITTAL APPROVAL | | | CAT NO.: 66 411 | | BEGA |
| | | | PROJECT: - | | |
| APPROVED BY: _____ | | LOCATION: - | | 1000 Bega Way Carpinteria, Ca. 93013 (805) 684-0533 | |
| SIGNED: _____ | | DATE: _____ | | | |
| REV. | DATE | DESCRIPTION | DRAWN: RA DATE: 9/12/2017 FILE NAME: 66411.dxf | | |
| This print contains confidential information which is the property of BEGA U.S. By acception this information, the borrower agrees that it will not be used for any other purpose other than that which is was loaned. | | | | | |

Pole top luminaires with asymmetrical light distribution

Housing: Two interlocking die-cast aluminum housings. Heavy gauge .080" spun aluminum shade with rolled edge, finished white inside. Die castings are marine grade, copper free ($\leq 0.3\%$ copper content) A360.0 aluminum alloy.

Arm: Fabricated from .125" wall aluminum extrusion formed into a continuous smooth radius, terminating and welded into a one piece die-cast aluminum fitter. Fitter slip fits a 3" O.D. pole top and is secured by six (6) socket head stainless steel set screws threaded into stainless steel inserts.

Enclosure: Lamp enclosure/optical system comprises an assembly of two pure anodized aluminum asymmetrical main beam reflectors with clear impact resistant acrylic lens with optical texture fixed to a heavy gauge .080" spun aluminum shade with rolled edge, finished white inside and rigidly fastened to the luminaire housing. Fasteners are stainless steel.

Electrical: 15.8W LED luminaire, 19 total system watts, -20°C start temperature. Integral 120V - 277V electronic LED driver, dimming not available. Standard LED color temperature is 4000K with a >80 CRI. Available in 3000K (>80 CRI); add suffix K3 to order.

Note: Due to the dynamic nature of LED technology, LED luminaire data on this sheet is subject to change at the discretion of BEGA-US. For the most current technical data, please refer to www.bega-us.com.

Finish: All BEGA standard finishes are polyester powder coat with minimum 3 mil thickness. Available in four standard BEGA colors: Black (BLK); White (WHT); Bronze (BRZ); Silver (SLV). To specify, add appropriate suffix to catalog number. Custom colors supplied on special order.

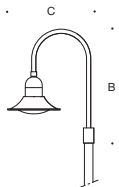
UL listed for US and Canadian Standards, suitable for wet locations. Protection class: IP65.

Weight: 23.1lbs.

EPA (Effective projection area): 1.7 sq. ft.

Luminaire Lumens: 2250

Type:
BEGA Product:
Project:
Voltage:
Color:
Options:
Modified:



Single pole-top luminaires

| | Lamp | LEED | A | B | C |
|---------------|-----------|------|------------------|------------------|------------------|
| 77 910 | 15.8W LED | LZ-2 | 19 $\frac{3}{4}$ | 40 $\frac{5}{8}$ | 32 $\frac{5}{8}$ |

Recommended for use with 14' to 18' poles.

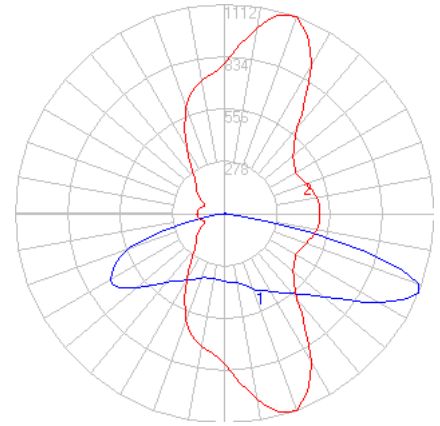
BEGA 1000 BEGA Way, Carpinteria, CA 93013 (805) 684-0533 FAX (805) 566-9474 www.bega-us.com

©copyright BEGA 2017 Updated 01/19

BEGA

Photometric Filename: 77910.ies

TEST: BE77910
TEST LAB: BEGA
DATE: 11/29/2016
LUMINAIRE: 77 910
LAMP: 15.8W LED



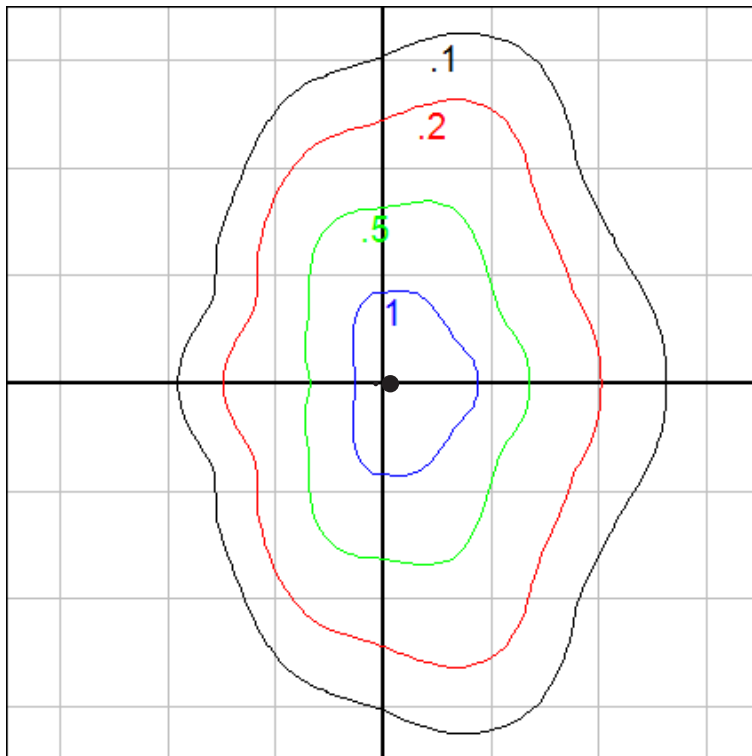
Characteristics

| | |
|------------------------------------|----------------------|
| IES Classification | Type III |
| Longitudinal Classification | Medium |
| Lumens Per Lamp | N.A. (absolute) |
| Total Lamp Lumens | N.A. (absolute) |
| Luminaire Lumens | 2250 |
| Downward Total Efficiency | N.A. |
| Total Luminaire Efficiency | N.A. |
| Luminaire Efficacy Rating (LER) | 118 |
| Total Luminaire Watts | 19 |
| Ballast Factor | 1.00 |
| Upward Waste Light Ratio | 0.00 |
| Max. Cd. | 1111.8 (290H, 67.5V) |
| Max. Cd. (<90 Vert.) | 1111.8 (290H, 67.5V) |
| Max. Cd. (At 90 Deg. Vert.) | 4 (0.2%Lum) |
| Max. Cd. (80 to <90 Deg. Vert.) | 221 (9.8%Lum) |
| Cutoff Classification (deprecated) | N.A. (absolute) |

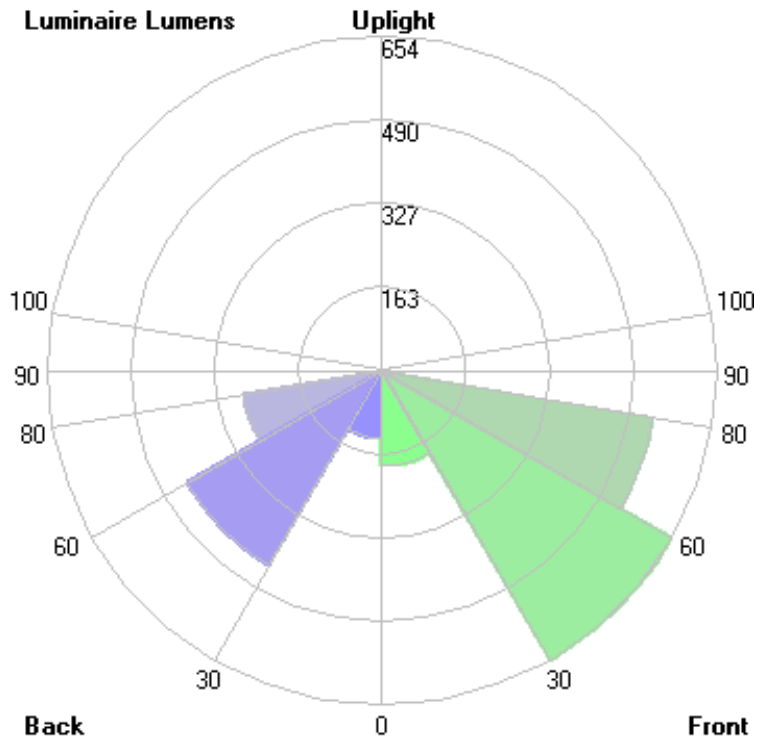
Lum. Classification System (LCS)

| LCS Zone | Lumens | %Lamp | %Lum |
|--------------|--------|-------|-------|
| FL (0-30) | 186.9 | N.A. | 8.3 |
| FM (30-60) | 653.8 | N.A. | 29.1 |
| FH (60-80) | 537.8 | N.A. | 23.9 |
| FVH (80-90) | 13.8 | N.A. | 0.6 |
| BL (0-30) | 132.5 | N.A. | 5.9 |
| BM (30-60) | 439.5 | N.A. | 19.5 |
| BH (60-80) | 274.2 | N.A. | 12.2 |
| BVH (80-90) | 10.3 | N.A. | 0.5 |
| UL (90-100) | 1.3 | N.A. | 0.1 |
| UH (100-180) | 0.1 | N.A. | 0.0 |
| Total | 2250.2 | N.A. | 100.0 |

BUG Rating B1-U1-G1



Mounting Height: 15 ft. 8 in. (1508HR) Grid Spacing: 15 ft.



In the interest of product improvement, BEGA reserves the right to make technical changes without notice.

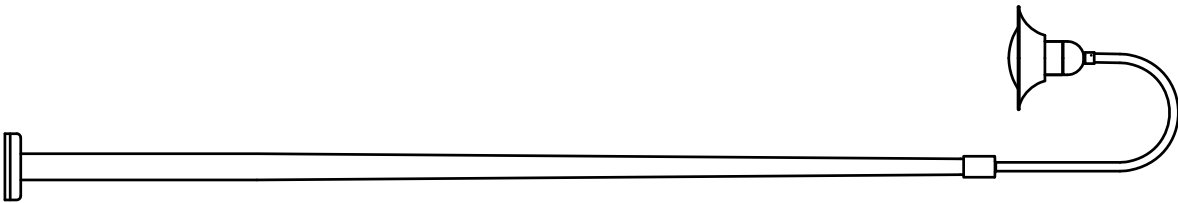
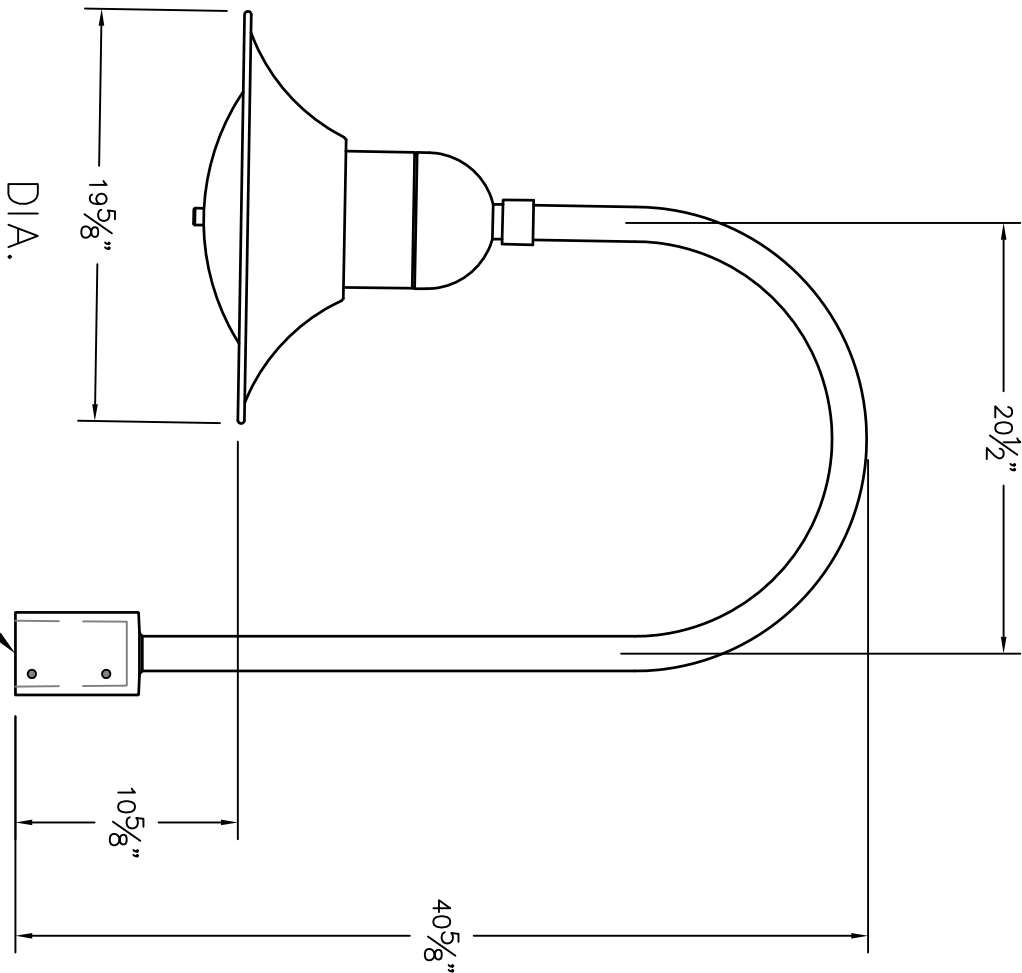
BEGA 1000 Bega Way, Carpinteria, CA 93013 (805)684-0533 Fax (805)566-9474 www.bega-us.com © Copyright BEGA-US 2017

8/8/2017

NOTES:

1. LUMINAIRE # 77 910 – SEE SPECIFICATIONS.

SLIP FITS 3" O.D.
POLE OR TENON
(REQUIRES A MINIMUM 4 1/2" LENGTH OF
STRAIGHT DIA. POLE/TENON)



SHOWN ON 1508HR

TYPE: _____

| | | | | | |
|---------------------------|------|--------------------|---|---|-------------|
| SUBMITTAL APPROVAL | | | CAT NO.: <u>77 910</u> | | BEGA |
| | | | PROJECT: <u>-</u> | | |
| APPROVED BY: _____ | | LOCATION: <u>-</u> | | 1000 Bega Way Carpinteria, Ca. 93013 (805) 684-0533 | |
| SIGNED: _____ | | DATE: _____ | | | |
| REV. | DATE | DESCRIPTION | DRAWN: <u>RA</u> DATE: <u>7/24/2017</u> FILE NAME: <u>77910.dxf</u> | | |

This print contains confidential information which is the property of BEGA U.S. By acception this information, the borrower agrees that it will not be used for any other purpose other than that which is was loaned.

BEGA LED system bollard - luminaire head
with shielded light - 360°

Enclosure: Housing constructed of die-cast aluminum. Die-castings are marine grade, copper free (≤ 0.3% copper content) A360.0 aluminum alloy. Glass diffuser, inside white. Fully gasketed for weather tight operation using molded silicone gasket.

Installation: BEGA LED system bollards are designed for easy attachment to system bollard tubes using an interlocking stainless steel mechanism and stainless steel set screw threaded into stainless steel insert. An accompanying bollard tube must be selected for proper installation, see below chart for compatible tube options.

Electrical: 16.5W LED luminaire, 19.8 total system watts, -30°C start temperature. Integral 120V through 277V electronic LED driver, 0-10V dimming. LED module(s) are available from factory for easy replacement. Standard LED color temperature is 3000K with a >80 CRI. Available in 4000K (>80 CRI); add suffix K4 to order.

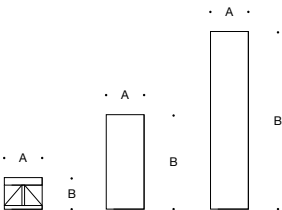
Note: LEDs supplied with luminaire. Due to the dynamic nature of LED technology, LED luminaire data on this sheet is subject to change at the discretion of BEGA-US. For the most current technical data, please refer to www.bega-us.com.

Finish: All BEGA standard finishes are polyester powder coat with minimum 3 mil thickness. Available in four standard BEGA colors: Black (BLK); White (WHT); Bronze (BRZ); Silver (SLV). To specify, add appropriate suffix to catalog number. Custom colors supplied on special order.

CSA certified to U.S. and Canadian standards, suitable for wet locations. Protection class IP65

Weight: 8.4 lbs

Luminaire Lumens: 1286



| Bollard heads · shielded · 360° | | | |
|---------------------------------|-----------|----|----|
| | Lamp | A | B |
| 99 862 | 16.5W LED | 7½ | 5½ |

| Bollard tubes | | | | |
|---------------|--------------------------------|------|--------|--------------|
| | Integrated components | Door | A | B Anch. unit |
| 99 622 | — | ✓ | 7½ | 32 79 818 |
| 99 644 | 1 LED floodlight 19.3W | ✓ | 7½ | 32 79 818 |
| 99 626 | GFCI outlet | ✓ | 7½ | 32 79 818 |
| 99 658 | Passive infrared motion sensor | ✓ | 7½ | 32 79 818 |
| 99 635 | Emergency lighting battery 10W | ✓ | 7½ | 32 79 818 |
| 99 615 | — | | 7½ 14½ | 79 817 |

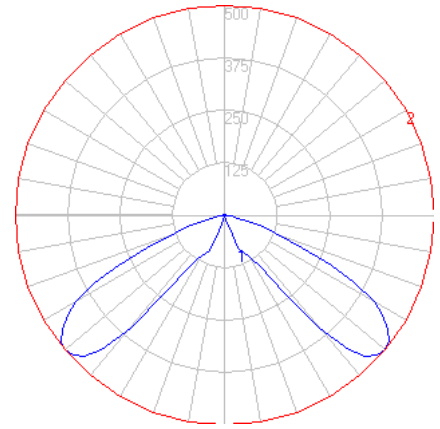
Type:
BEGA Product:
Project:
Voltage:
Color:
Options:
Modified:



BEGA

Photometric Filename: 99862.ies

TEST: BE_99862
TEST LAB: BEGA
DATE: 5/11/2017
LUMINAIRE: 99 862
LAMP: 16.5W LED



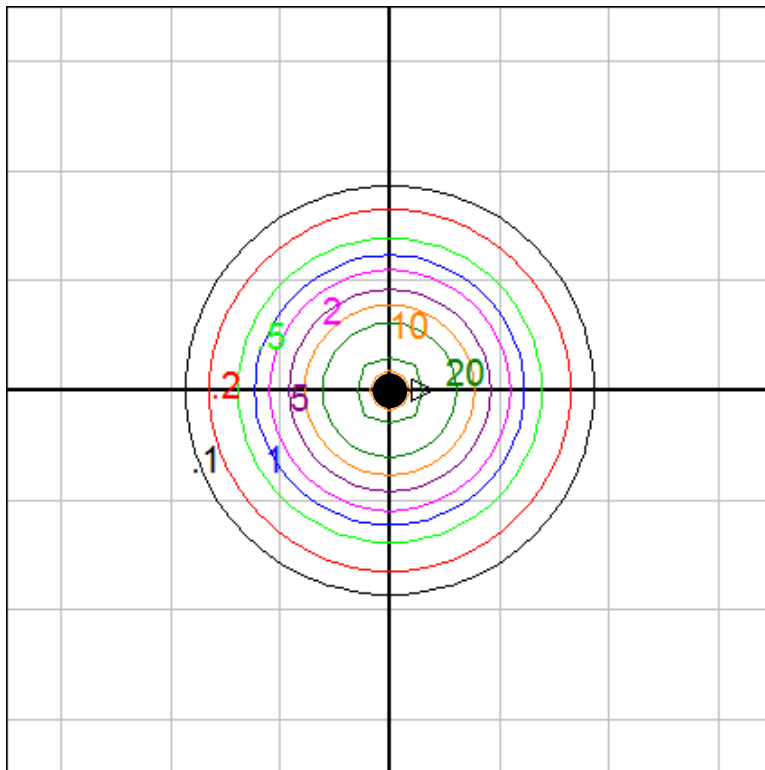
Characteristics

| | |
|------------------------------------|-----------------|
| IES Classification | Type V |
| Longitudinal Classification | Short |
| Lumens Per Lamp | N.A. (absolute) |
| Total Lamp Lumens | N.A. (absolute) |
| Luminaire Lumens | 1280 |
| Downward Total Efficiency | N.A. |
| Total Luminaire Efficiency | N.A. |
| Luminaire Efficacy Rating (LER) | 65 |
| Total Luminaire Watts | 19.8 |
| Ballast Factor | 1.00 |
| Upward Waste Light Ratio | 0.00 |
| Max. Cd. | 500 (0H, 50V) |
| Max. Cd. (<90 Vert.) | 500 (0H, 50V) |
| Max. Cd. (At 90 Deg. Vert.) | 0 (0.0%Lum) |
| Max. Cd. (80 to <90 Deg. Vert.) | 14.3 (1.1%Lum) |
| Cutoff Classification (deprecated) | N.A. (absolute) |

Lum. Classification System (LCS)

| LCS Zone | Lumens | %Lamp | %Lum |
|--------------|--------|-------|-------|
| FL (0-30) | 23.0 | N.A. | 1.8 |
| FM (30-60) | 446.4 | N.A. | 34.9 |
| FH (60-80) | 167.8 | N.A. | 13.1 |
| FVH(80-90) | 2.9 | N.A. | 0.2 |
| BL (0-30) | 23.0 | N.A. | 1.8 |
| BM (30-60) | 446.4 | N.A. | 34.9 |
| BH (60-80) | 167.8 | N.A. | 13.1 |
| BVH(80-90) | 2.9 | N.A. | 0.2 |
| UL (90-100) | 0.0 | N.A. | 0.0 |
| UH (100-180) | 0.0 | N.A. | 0.0 |
| Total | 1280.2 | N.A. | 100.0 |

BUG Rating B1-U0-G0

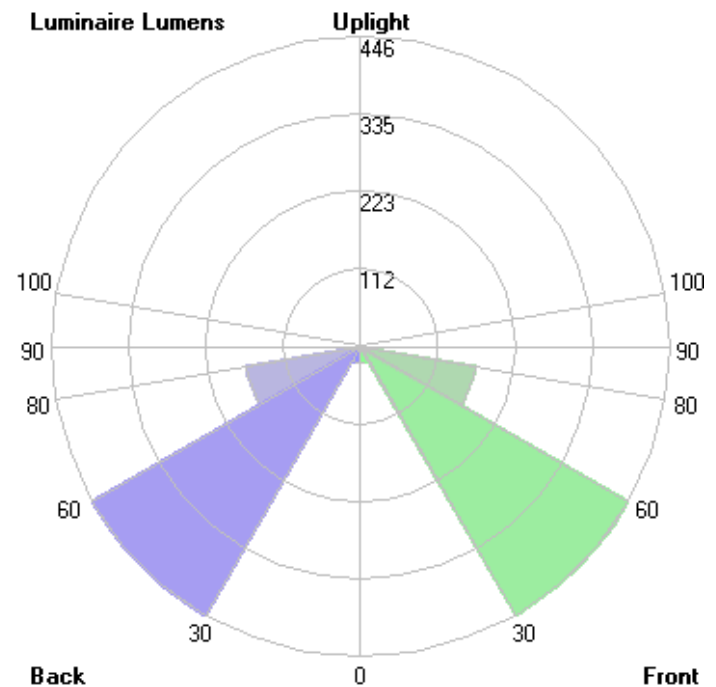


Mounting Height = 2.2 ft. Grid Spacing = 5 ft.

*Using 99 620 system bollard tube

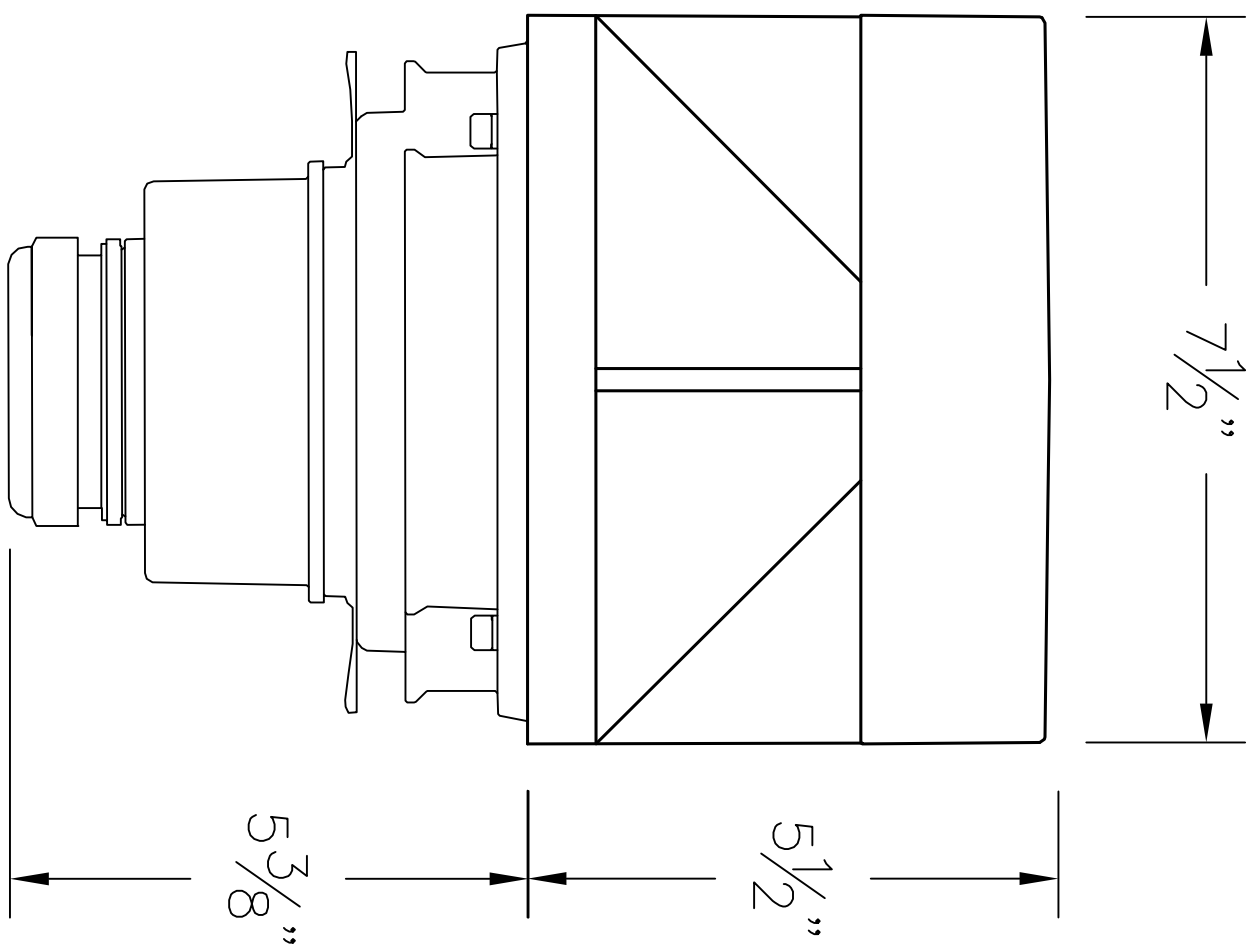
In the interest of product improvement, BEGA reserves the right to make technical changes without notice.

BEGA 1000 Bega Way, Carpinteria, CA 93013 (805)684-0533 Fax (805)566-9474 www.bega-us.com © Copyright BEGA-US 2019



8/19/2019

NOTES: SYSTEM BOLLARD HEAD # 99 862 – SEE SPECIFICATIONS



99 862 Shown on
Bollard Tube 99 615

(SCALE 1:2)

TYPE: _____

| | | | | | |
|--|------|-------------|--|--|------|
| SUBMITTAL APPROVAL | | | CAT NO.: 99 862 | | BEGA |
| | | | PROJECT: - | | |
| APPROVED BY: _____ | | | LOCATION: - | | |
| SIGNED: _____ DATE: _____ | | | DRAWN: RA DATE: 8/26/2016 File Name: 99862.DXF | | |
| REV. | DATE | DESCRIPTION | | | |
| This print contains confidential information which is the property of BEGA U.S. By acception this information, the borrower agrees that it will not be used for any other purpose other than that which is was loaned. | | | | | |