

MADISON LEWIS WOODLANDS CULTURAL LANDSCAPE REPORT
CHAPTER I: INTRODUCTION, SCOPE OF WORK & METHODOLOGY



Figure I.1. This current aerial view of the Madison Lewis Woodlands shows the approximate boundary of the Village-owned woodlands outlined in red. The site is located northeast of the village center on a sloping hillside behind residential homes built as part of the Robin Brae subdivision. Courtesy Microsoft LiveMap. (R-MLW-CurrentAerial-LiveMaps-2008-outlined.jpg)

MADISON LEWIS WOODLANDS CULTURAL LANDSCAPE REPORT
CHAPTER I: INTRODUCTION, SCOPE OF WORK & METHODOLOGY

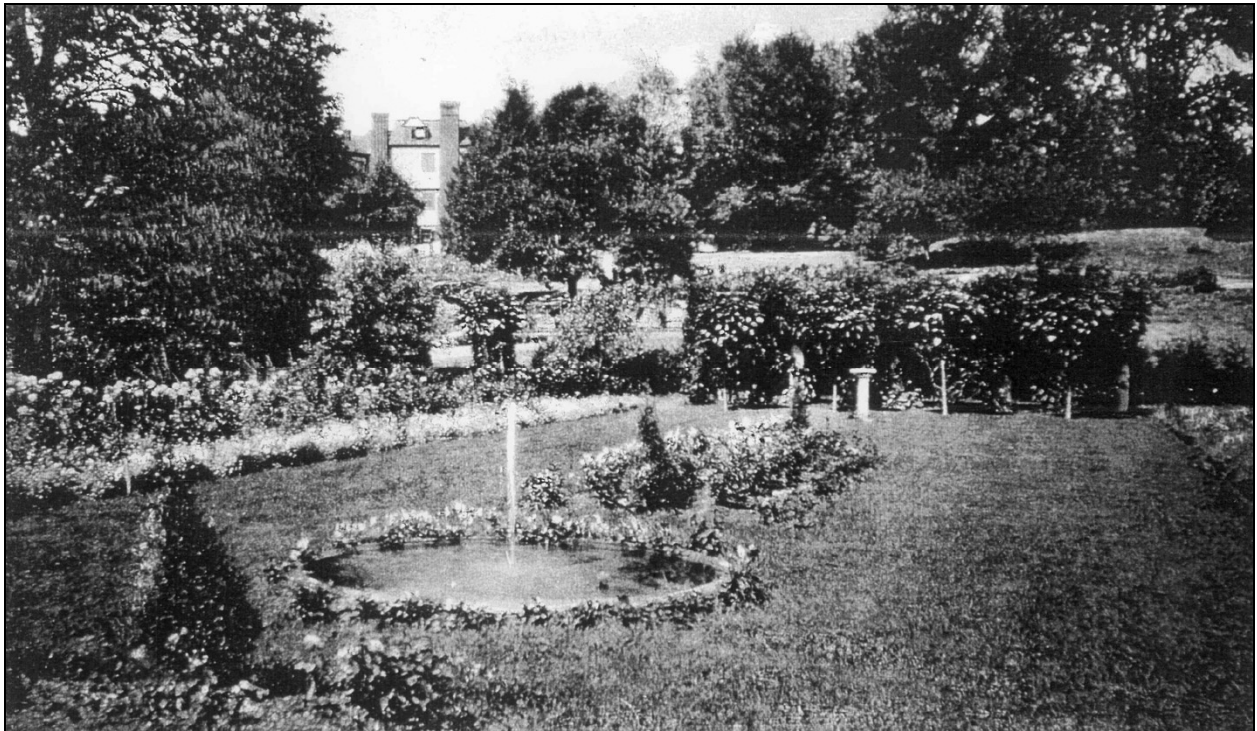


Figure I.2. This circa 1910 view looks southwest across the Italian Garden, revealing the former landscape character at the woodland edge. The central fountain is set into the ground and ringed by modest plantings. The woodlands are adjacent to the garden, located south and east (left) of frame. Courtesy Village of Warwick. (R-MLW-VW-BA-GardenPergola-1910.jpg)

MADISON LEWIS WOODLANDS CULTURAL LANDSCAPE REPORT
CHAPTER I: INTRODUCTION, SCOPE OF WORK & METHODOLOGY



Figure I.3. Remaining landscape features from the Belair estate era are found in the garden space, woodlands, and Colonial Avenue entry drive. The stone fountain basin and pavers are remnants of the formal Italian Garden. The woodland edge has extended to enclose more of the former garden. Courtesy Village of Warwick. (R-MLW-VW-004.jpg)



Figure I.4. The Madison Lewis Woodlands is comprised of two distinct landscape areas that remain from the historic period. The former garden, highlighted in pink, serves as the public entry from Robin Brae Drive and extends to the slope of the woodlands, to the east of the stream. The woodlands area, shown in orange, encompasses the majority of the 14-acre property. The historic Colonial Avenue entry drive and tree allée, noted in blue, is now a privately-owned residential driveway. However, as one of the landscape features that remains intact from the historic period, it is important to recognize its role in the overall character and understanding of the landscape. Aerial Courtesy Google Maps, annotated by Heritage Landscapes. (R-MLW-Landscape Areas.jpg)