

MADISON LEWIS WOODLANDS CULTURAL LANDSCAPE REPORT  
CHAPTER IV: MADISON LEWIS WOODLANDS LANDSCAPE  
ANALYSIS, INTEGRITY & SIGNIFICANCE

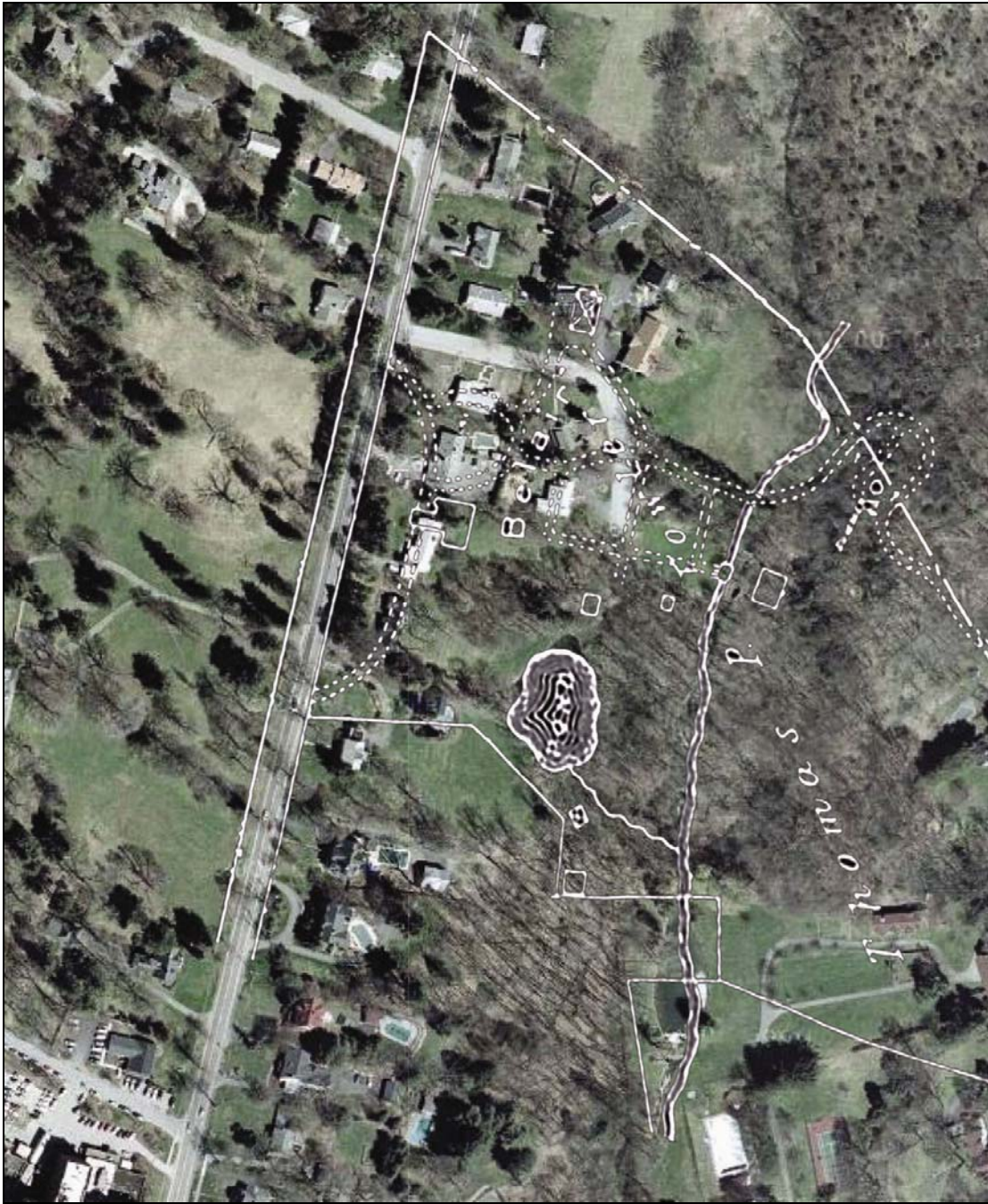


Figure IV.1. This image shows an overlay of a contemporary aerial with the 1903 Atlas of the Village of Warwick with much of the historic estate landscape, with the exception of the Colonial Avenue entrance drive. As evident in the overlay, overall patterns of spatial organization remain, particularly in the former garden space, while individual landscape features have been altered or removed. Aerial courtesy Google Maps, Atlas courtesy Albert Wisner Public Library, overlay courtesy Heritage Landscapes. (R-MLW-Overlay-CurrentAerial-GoogleMaps-1903-Atlas-PondAlign.jpg)

MADISON LEWIS WOODLANDS CULTURAL LANDSCAPE REPORT  
CHAPTER IV: MADISON LEWIS WOODLANDS LANDSCAPE  
ANALYSIS, INTEGRITY & SIGNIFICANCE



Figure IV.2. This image shows an overlay of a contemporary aerial with the 1903 Atlas of the Village of Warwick detail of Belair, focusing on the Colonial Avenue carriage drive. The entrance into the Madison Lewis Woodlands remains today, although it functions as a private driveway. Aerial courtesy Google Maps, Atlas courtesy Albert Wisner Public Library, overlay courtesy Heritage Landscapes. (R-MLW-Overlay-CurrentAerial-GoogleMaps-1903-Atlas-ColonialAlign.jpg)